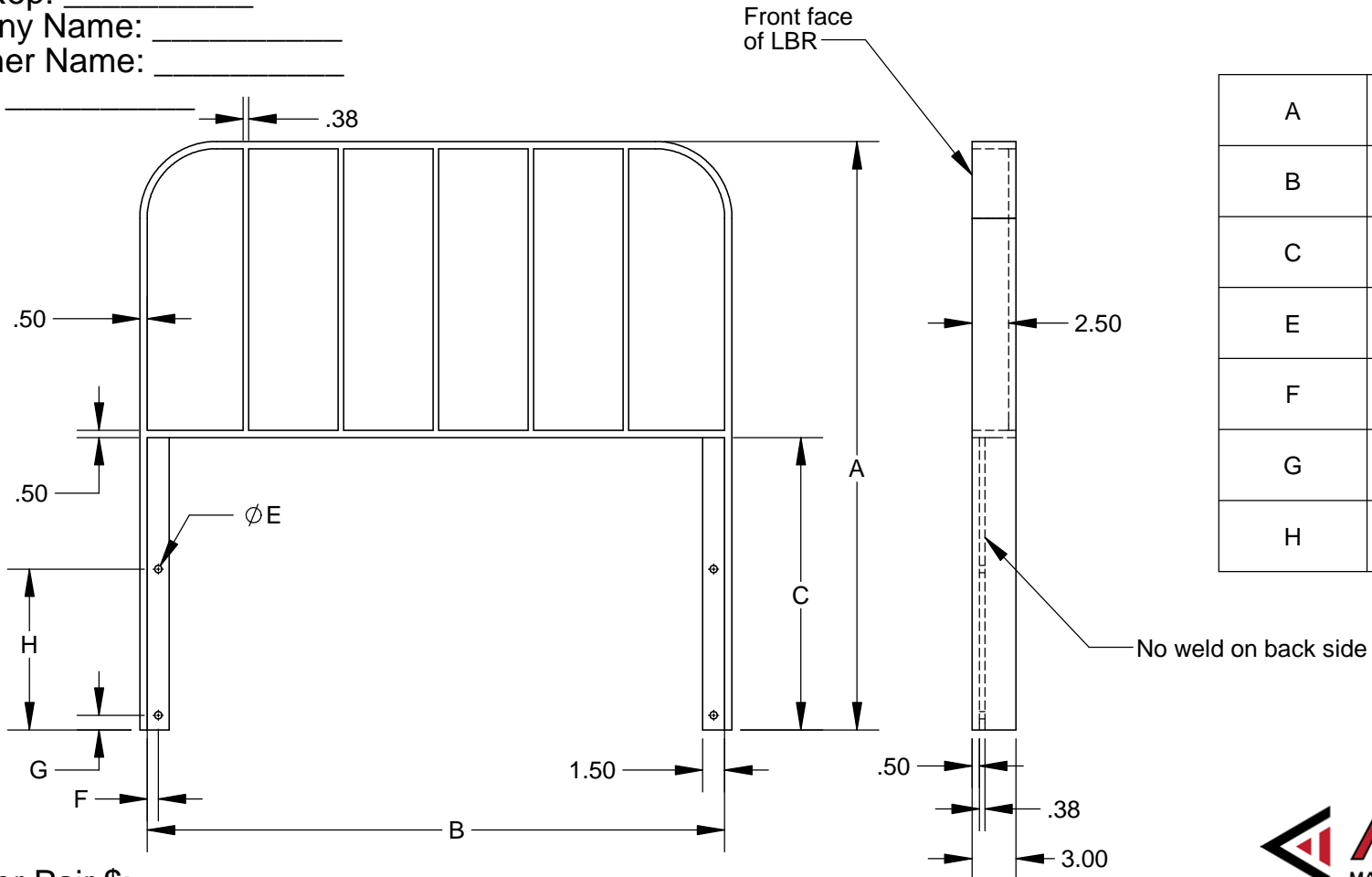


Machine Model #: \_\_\_\_\_  
 Machine Capacity: \_\_\_\_\_

Fax: 913-227-0523  
 SPECIAL ORDER NON RETURNABLE

**PROPRIETARY AND CONFIDENTIAL**  
 THE INFORMATION CONTAINED IN THIS  
 DRAWING IS THE SOLE PROPERTY OF  
 ARROW ACQUISITION, LLC. ANY  
 REPRODUCTION IN PART OR AS A WHOLE  
 WITHOUT THE WRITTEN PERMISSION OF  
 ARROW ACQUISITION, LLC IS  
 PROHIBITED.

Date: \_\_\_\_\_  
 Sales Rep: \_\_\_\_\_  
 Company Name: \_\_\_\_\_  
 Customer Name: \_\_\_\_\_  
 Phone: \_\_\_\_\_



A	
B	
C	
E	
F	
G	
H	

Price per Pair \$: \_\_\_\_\_

Estimated Lead Time: \_\_\_\_\_

Customer Signature: \_\_\_\_\_ Date: \_\_\_\_\_



TITLE: Load Backrest, Front Mount		
SIZE <b>A</b>	DWG. NO. <b>Form-OF-005HB</b>	REV <b>3</b> 14 May 18
SCALE: 1:12		SHEET 1 OF 1

Rev	By	Date	Description
3	VS	14 May 18	Change D dimension to 1.50" by default.
2	VS	18 Jul 16	Added note, "no weld on back side"
1	VS	22 Sep 15	Revised vertical flat bar and front mount plate

	NAME	DATE
DRAWN	VS	8 Sep 15
CHECKED		