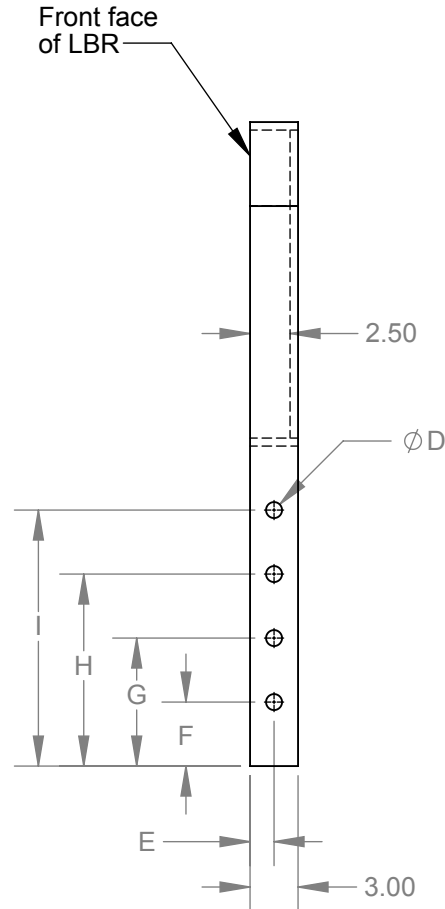
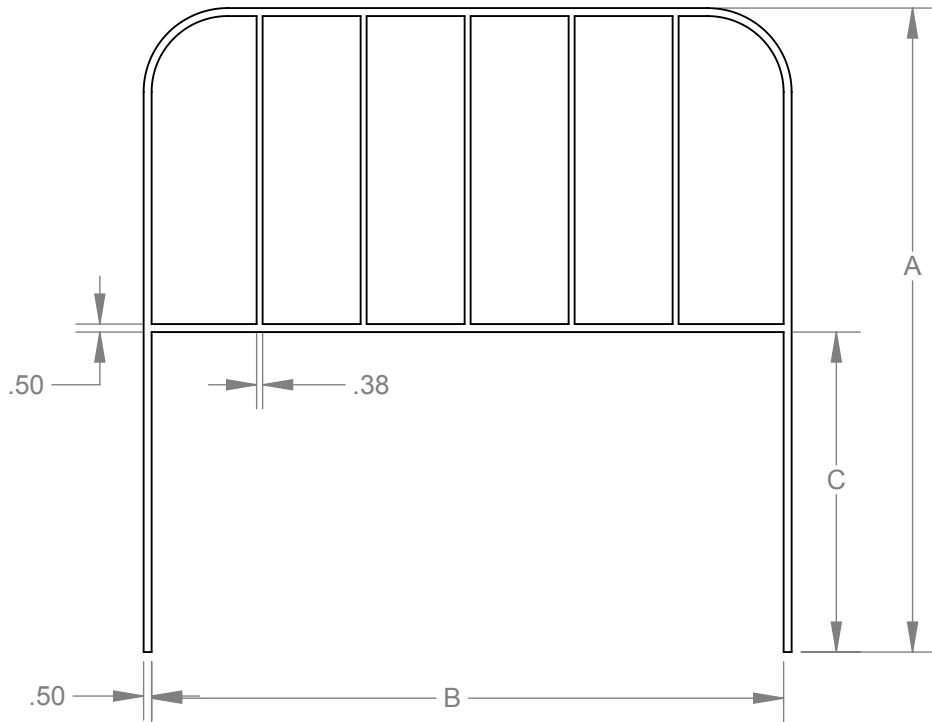


Machine Model #: \_\_\_\_\_  
 Machine Capacity: \_\_\_\_\_

Fax: 913-227-0523  
 SPECIAL ORDER NON RETURNABLE

**PROPRIETARY AND CONFIDENTIAL**  
 THE INFORMATION CONTAINED IN THIS DRAWING IS THE SOLE PROPERTY OF ARROW MATERIAL HANDLING. ANY REPRODUCTION IN PART OR AS A WHOLE WITHOUT THE WRITTEN PERMISSION OF ARROW MATERIAL HANDLING IS PROHIBITED.

Date: \_\_\_\_\_  
 Sales Rep: \_\_\_\_\_  
 Company Name: \_\_\_\_\_  
 Customer Name: \_\_\_\_\_  
 Phone: \_\_\_\_\_



A	
B	
C	
D	
E	
F	
G	
H	
I	



Price \$: \_\_\_\_\_

Estimated Lead Time: \_\_\_\_\_

Customer Signature: \_\_\_\_\_ Date: \_\_\_\_\_

	NAME	DATE
DRAWN	VS	8 Sep 15
CHECKED		
ENG APPR.		
MFG APPR.		
Q.A.		

TITLE:  
**Load Backrest, Side Mount**

SIZE DWG. NO. REV  
**A Form-OF-005HA** 1  
 21 Sep 15

SCALE: 1:12 SHEET 1 OF 1

Rev	By	Date	Description
1	VS	21 Sep 15	Revised vertical flat bars to be flushed with the front face of LBR